

CERTIFICATE OF LOCATION OF GOVERNMENT CORNER

NORTH 1/4 Corner of Section 29, Township 106, Range 42, 5TH P.M.

STATE OF MINNESOTA, County of MURRAY

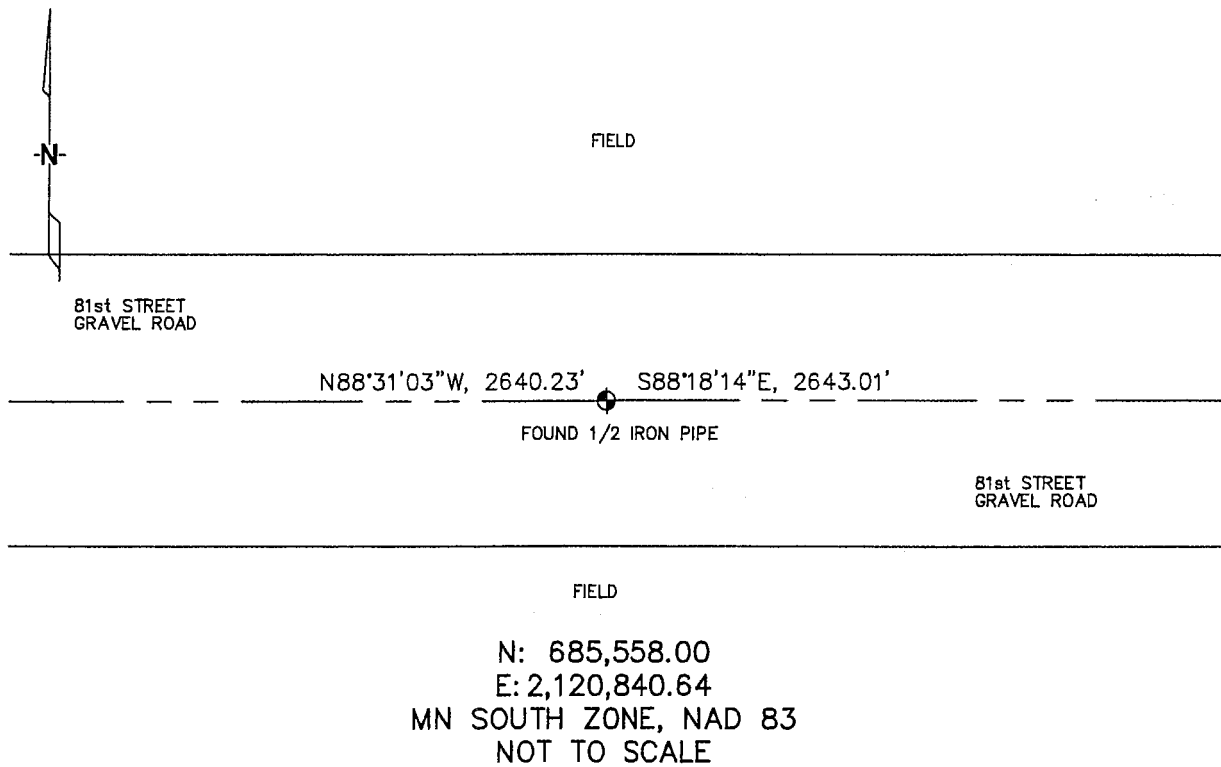
At the corner location shown on the sketch :

On 3/21/2006 found 1/2" IRON PIPE IN C/L OF GRAVEL ROAD.

left monument as found, lowered monument, removed monument (explain)

On _____ set _____

Sketch of reference ties



Statement of evidence relative to this corner location is on back page

I hereby certify that this document and the data contained herein was prepared by me or under my direct supervision.

Thomas V. Zeff 6/29/06
Thomas V. Zeff Date

Registration No. 44563

- Land Surveyor, Professional Engineer
- County Surveyor, County Engineer

OFFICE OF THE COUNTY RECORDER

County of _____

SEP 28 2006

I hereby certify that this document was filed in the Co. Recorders office at _____ M. on the day of _____ A.D., 20

County Recorder James V. Johnson
By _____, Deputy

DOCUMENT NO. _____

STATEMENT OF EVIDENCE:

NORTH 1/4 CORNER, SECTION 29, T. 106 N., R. 42 W.,
MURRAY COUNTY, MINNESOTA

- 1866 J.W. Bishop, Us. Deputy Surveyor, monumented corner.
- 11/11/1912 Murray Co., placed a 10"X12"X18" stone on corner, in a road; no ties.
- 3/21/2006 Ulteig Engineers, Inc., Survey Crew, Brain Payne Party Chief,
found a 1/2" iron pipe, in C/L of gravel road.
Ties: E-2643.01' to NE corner, Section 29;
W-2640.23' to NW corner, Section 29.